

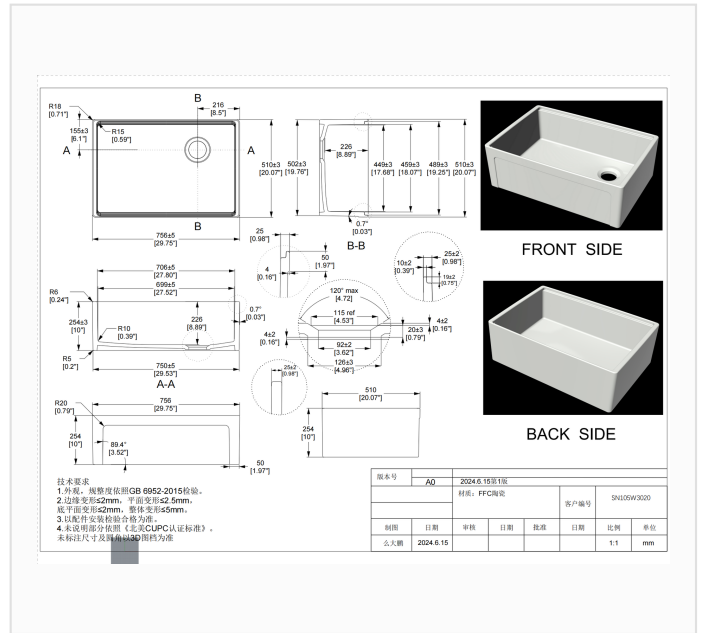
SN105W3020

SPEC SHEET · REV A · JUNE 2026

30-inch Country Apron-Front Fireclay Farmhouse Workstation Kitchen Sink



GLOSSY WHITE · SN105W3020



DIMENSION DRAWING · INCH [MM]

SPECIFICATIONS

Model	SN105W3020
Product type	Workstation farmhouse kitchen sink, flat country apron front
Configuration	Workstation, single bowl
Overall dimensions	29 3/4" x 20" x 10" (756 x 510 x 254 mm)
Bowl depth, interior	8.89" (226 mm)
Wall thickness	0.98" (25 ± 2 mm)
Drain opening	Ø 3.62" (92 mm), fits standard 3 1/2" drains, garbage-disposal compatible · Ø 4.96" (126 mm) re
Corner radius	R 0.59" (15 mm) interior corners · R 0.39" (10 mm) bowl bottom
Material	Fireclay ceramic, kiln-fired
Finish	Glossy White
Installation	Apron front / farmhouse
Available sizes	30" · 33" — this sheet: 30"
Certification	cUPC listed (US & Canada)

TRADE TERMS

MOQ	QUOTE REPLY	LEAD TIME
50 pcs	Within 24 hours	30–45 days after sample approval