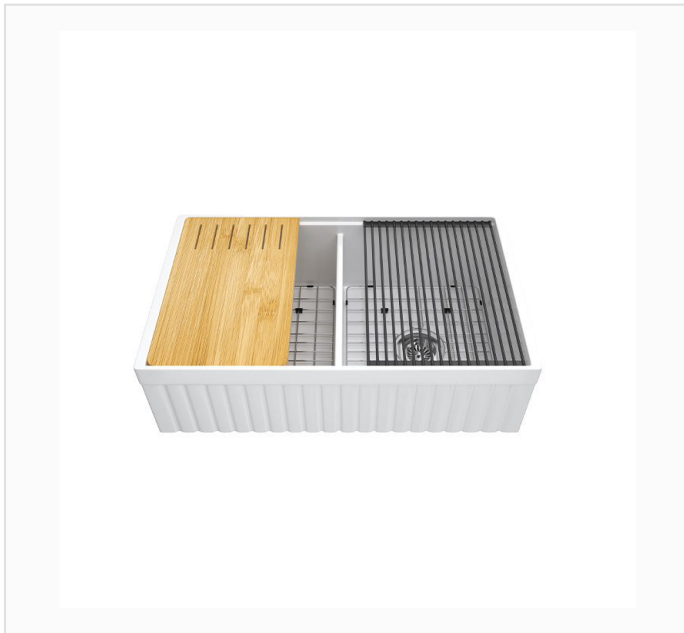


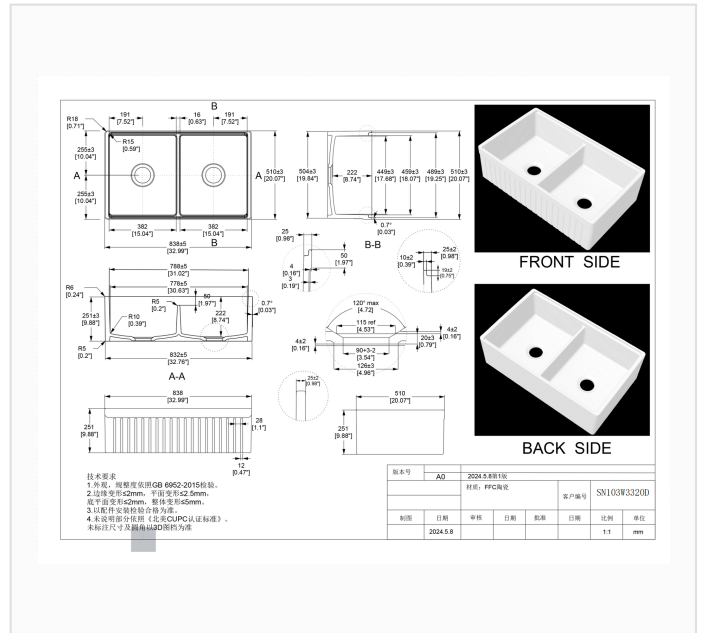
SN103W3320D

SPEC SHEET · REV A · JUNE 2026

33-inch Fluted Apron-Front Fireclay Farmhouse Workstation Kitchen Sink, Double Bowl



GLOSSY WHITE · SN103W3320D



DIMENSION DRAWING · INCH [MM]

SPECIFICATIONS

Model	SN103W3320D
Product type	Workstation farmhouse kitchen sink, fluted apron front
Configuration	Workstation, double bowl 50/50 — low divider (2" / 50 mm below rim)
Overall dimensions	33" x 20" x 10" (838 x 510 x 251 mm)
Bowl depth, interior	9 7/8" (251 ± 3 mm)
Wall thickness	0.39" (10 ± 2 mm)
Drain opening	3 1/2" (Ø 90 mm), garbage-disposal compatible · Ø 4.96" (126 mm) recess, 0.16" (4 mm) deep
Corner radius	Bowl corners R 0.59" (15 mm) · bowl bottom R 0.39" (10 mm) · top edge R 0.24" (6 mm)
Material	Fireclay ceramic, kiln-fired
Finish	Glossy White
Installation	Apron front / farmhouse
Certification	 cUPC listed (US & Canada)

TRADE TERMS

MOQ
1 unit via freight forwarder, or 1 x 20-ft container

QUOTE REPLY
Within 24 hours

LEAD TIME
30–45 days after sample approval