

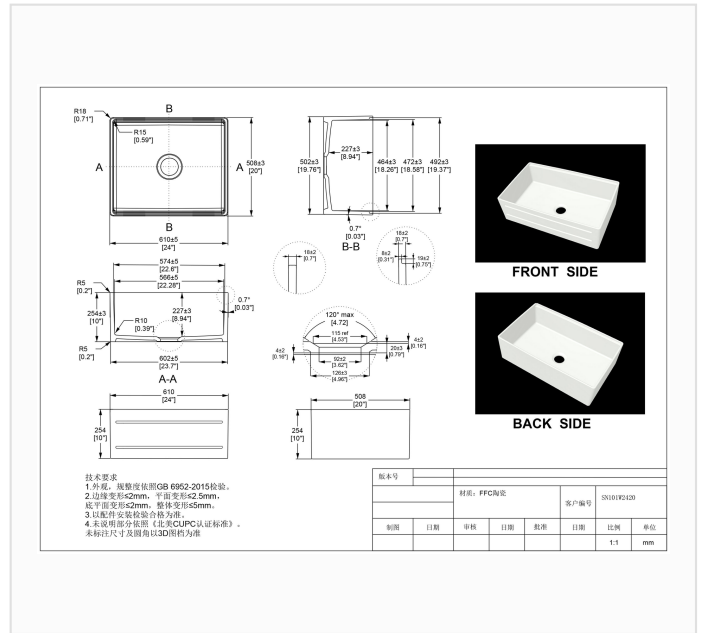
SN101W2420

SPEC SHEET · REV A · JUNE 2026

24-inch Reversible Apron-Front Fireclay Farmhouse Workstation Kitchen Sink



GLOSSY WHITE · SN101W2420



DIMENSION DRAWING · INCH [MM]

SPECIFICATIONS

Model	SN101W2420
Product type	Workstation farmhouse kitchen sink, reversible apron front
Configuration	Workstation, single bowl
Overall dimensions	24" x 20" x 10" (610 x 508 x 254 mm)
Bowl depth, interior	8.94" (227 mm)
Wall thickness	0.7" (18 ± 2 mm)
Drain opening	3.62" (Ø 92 mm), garbage-disposal compatible · Ø 4.96" (126 mm) recess
Corner radius	R18 (0.71") exterior · R15 (0.59") interior corners · R10 (0.39") bowl bottom
Material	Fireclay ceramic, kiln-fired
Finish	Glossy White
Installation	Apron front / farmhouse
Available sizes	24" · 33" — this sheet: 24"
Certification	cUPC listed (US & Canada)

TRADE TERMS

MOQ	QUOTE REPLY	LEAD TIME
50 pcs	Within 24 hours	30–45 days after sample approval